

Dynamic Response of Steel Structure with Bracings and Translational Tuned Mass Dampers

Naveena K N, Chetan K



Abstract: In this work the dynamic response of steel structure with Bracings and Translational Tuned Mass Damper (TTMD) are studied. TTMD is a device that consists of a mass which is connected to the structure by means of a spring and a damper. The mass is tuned to vibrate at the different frequency as the structure, which allows it to cancel out the vibrations of the structure. Bracings are added to the structure to provide additional stiffness and strength. G+5, G+15 and G+25 Storeyed steel structure models with the different combinations of bracings and TTMD are considered in this study. Following which the FE Analysis involving the modal, equivalent static and response spectrum analysis are performed and results are obtained in terms of Time period, Base Shear, storey displacement and Storey drift all are discussed.

Keywords: Modal Analysis, Equivalent Static Analysis, Response Spectrum, Time Period, Displacement.

I. INTRODUCTION

Earthquakes induce complicated ground vibrations that are converted into dynamic loads which damage buildings and other structures by causing the ground and everything linked to it to oscillate. Civil engineers always try to find better ways to deal with this issue. Traditional methods of system strengthening need more resources and energy. Furthermore, greater seismic forces result from greater masses. Alternate methods, such passive control systems, have shown to be able to minimize the impacts of seismic activity and other dynamic factors on Civil Engineering Structures. Steel structures perform differently during earthquakes and their behavior changes from being elastic to being inelastic in nature. Steel constructions' strength and stiffness are maintained by releasing a significant amount of energy during seismic effects. More emphasis should be placed on improving the structure's stiffness than its strength. The basic way to enhance stiffness is to install certain mechanisms that can withstand lateral loads. Moment resistant frames along with bracing systems efficiently improve the structure's rigidity. However, these systems limit the flexibility of the structure. TMD is also known as a

Harmonic absorber or seismic damper. It is mounted on the top storey of building to reduce the displacement of the building. Tuned mass damper consists spring mechanism on which the massive mass is hung. The spring mechanism has lots of advantages like spring helps mass damper to sway against in direction of movement of the building that help to make building stable during the earthquake.

II. OBJECTIVE OF THE PROJECT

1. To study the Dynamic Response of Steel Structure with Bracings and Tuned Mass Dampers
2. To design the Translational Tuned Mass Dampers.
3. FE Analysis involving Modal, Equivalent Static and Response Spectrum Analyses to be performed on steel structure with different bracing systems and Translational Tuned mass dampers.

III. METHODOLOGY

1. Three types of Bracings consider for the study are namely X, V and Inverted V bracings.
2. The Design of translational tuned mass damper are carried out as per procedure adopted in Connor J and Laflamme S. (2014).
3. FE Analyses performed on G+5, G+15, G+25 Storey steel structure with three different types of bracings and Translational tuned mass damper to obtain Time period, Base shear, Storey displacement and Storey drift.

IV. MODELLING

The Nomenclature and description of the G+5, G+15, G+25 Storey steel structure modelling has been tabulated in Table 1. All the models are having been analyses by using Etabs software.

Table I: Nomenclature the Models

Models	Nomenclature
G+5 Storey Steel Structure	
Bare frame	BF5
Bare frame + X-Bracing	X5
Bare frame + V-Bracing	V5
Bare frame +Inverted V-Bracing	IV5
Bare frame +Translational TMD	TD5
Bare frame + Translational TMD + X-Bracing	TDX5
Bare frame + Translational TMD + V-Bracing	TDV5
Bare frame + Translational TMD + Inverted V-Bracing	TDIV5
G+15 Storey Steel Structure	
Bare frame	BF15
Bare frame + X-Bracing	X15

Manuscript received on 30 March 2024 | Revised Manuscript received on 11 April 2024 | Manuscript Accepted on 15 April 2024 | Manuscript published on 30 June 2024.

*Correspondence Author(s)

Naveena K N*, Department of Civil Engineering, Bangalore University, Bangalore (Karnataka), India. E-mail: knnandini600@gmail.com, ORCID ID: 0009-0000-4262-1727

Dr. Chetan K, Department of Civil Engineering, Bangalore University, Bangalore (Karnataka), India. E-mail: k.chethu@gmail.com

© The Authors. Published by Blue Eyes Intelligence Engineering and Sciences Publication (BEIESP). This is an open access article under the CC-BY-NC-ND license <http://creativecommons.org/licenses/by-nc-nd/4.0/>

Dynamic Response of Steel Structure with Bracings and Translational Tuned Mass Dampers

Bare frame + V-Bracing	V15
Bare frame +Inverted V-Bracing	IV15
Bare frame +Translational TMD	TD15
Bare frame + Translational TMD + X-Bracing	TDX15
Bare frame + Translational TMD + V-Bracing	TDV15
Bare frame + Translational TMD + Inverted V-Bracing	TDIV15
G+25 Storey Steel Structure	
Bare frame	BF25
Bare frame + X-Bracing	X25
Bare frame + V-Bracing	V25
Bare frame +Inverted V-Bracing	IV25
Bare frame +Translational TMD	TD25
Bare frame + Translational TMD + X-Bracing	TDX25
Bare frame + Translational TMD + V-Bracing	TDV25
Bare frame + Translational TMD + Inverted V-Bracing	TDIV25

The Plan of Bare frame model are created in software as shown in figure 1.

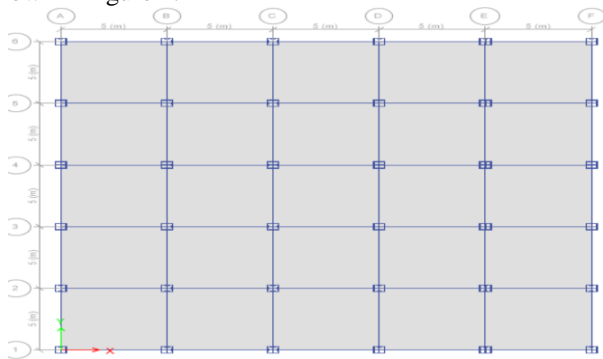
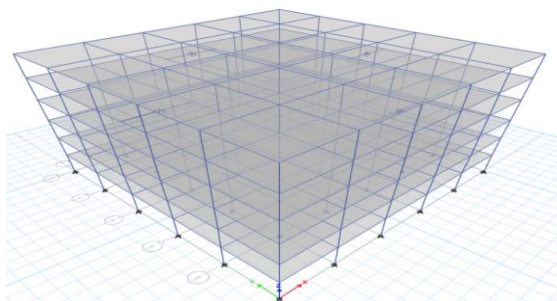
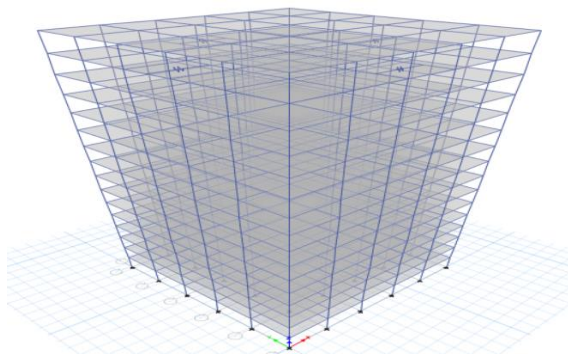


Fig 1: Plan of BF5, 15, 25

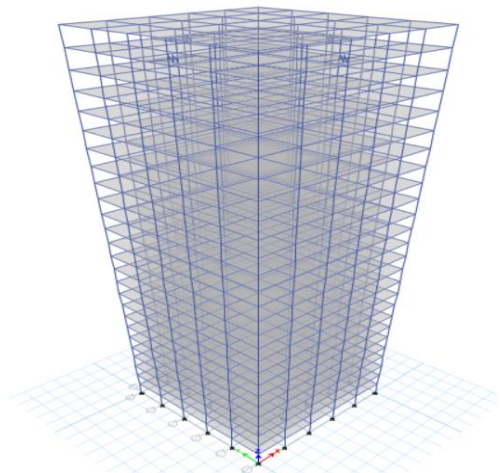
The 3D View of Bare frame model are created in software as shown in figure 2.



G+5 Storey



G+15 Storey



G+25 Storey

Fig 2: 3D View of Bare Frame Model (BF)

The structural configuration is FE modal creation using data are have been tabulated in table 2.

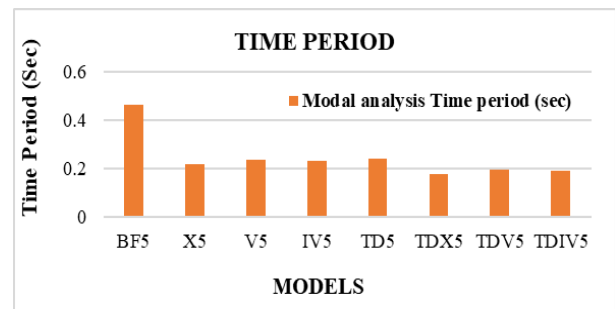
Table 2: Structural Configuration

Description	Data
Number of storeys	G+5, G+15, G+25
Seismic Zone	V
Seismic Zone Factor (Z)	0.36
Importance Factor (I)	1.5
Response Reduction Factor (R)	4.0
Damping Ratio	0.05
Soil Type	Medium Soil (Type II)
Span Length	5m
Column Size used	ISMB600@122.6 Kg/m
Beam Size used	ISMB500@86.9 Kg/m
Thickness of Slab	125mm
Floor Finish Load	1.5KN/m ²
Live Load	3KN/m ²
Story to story Height	3.0m
Bottom story Height	3.0m
Grade of Concrete (f_{ck})	M25
Grade of Structural Steel (f_{ys})	Fe345
Grade of Reinforcing Steel (f_{yr})	Fe 500
Load Combination	1.5 (DL+LL) 1.2 (DL+LL ± EQ) 0.9DL ± 1.5EQ

V. RESULTS AND DISCUSSIONS

A. Time Period:

Modal analyses Time Period are plotted in Figure 3



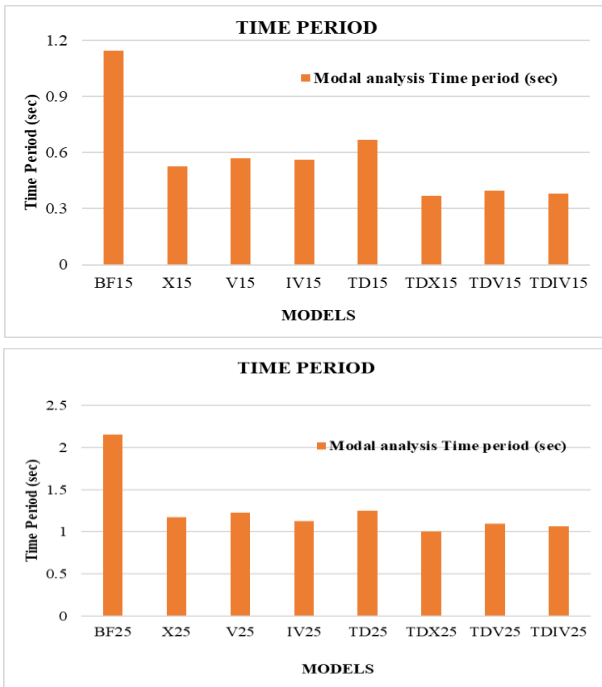


Fig 3: Time Period

1. The Time Period increases as the height of structure increases due to an increase in mass for all the models.
2. The Time Period is lowest in X-Bracings followed by IV-Bracings and V-Bracings for all the floor height due to the increase in stiffness by X-Bracings.
3. Excluding the Bare frame condition TDX is having the lowest Time Period due to the increase in stiffness by TDX and V-Bracing is having the highest Time Period for all the floor height due to the less stiffness in V-Bracing, when compare with all the models.

B. Base Shear

The base shear obtained from Response spectrum analysis are plotted in Figure 4,

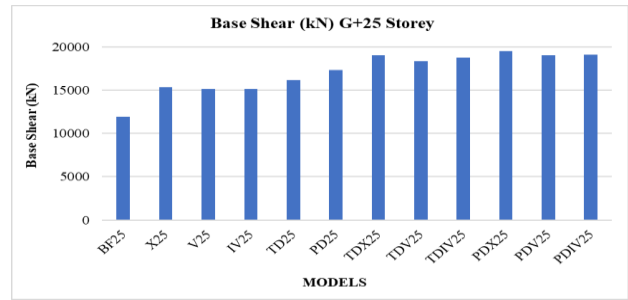
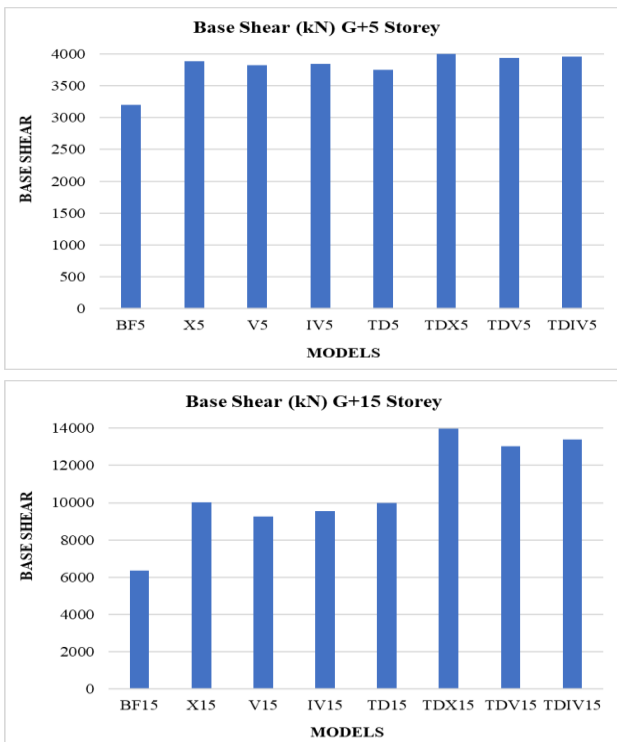


Fig 4: Dynamic base Shear

1. As height of the structure increases, Base Shear increases due to increase in self-weight of the structure for all the models.
2. The Base Shear is highest in X-Bracings followed by IV-Bracings and V-Bracings for all the floor height due to the increase in stiffness by X-Bracings.
3. Excluding the Bare frame condition TDX is having the highest Base Shear due to the increase in stiffness by TDX and V-Bracing is having the least Base Shear for all the floor height due to the lower stiffness in V-Bracing, when compare with all the models.

C. Storey Displacement

Maximum storey displacement is plotted in Figure 5

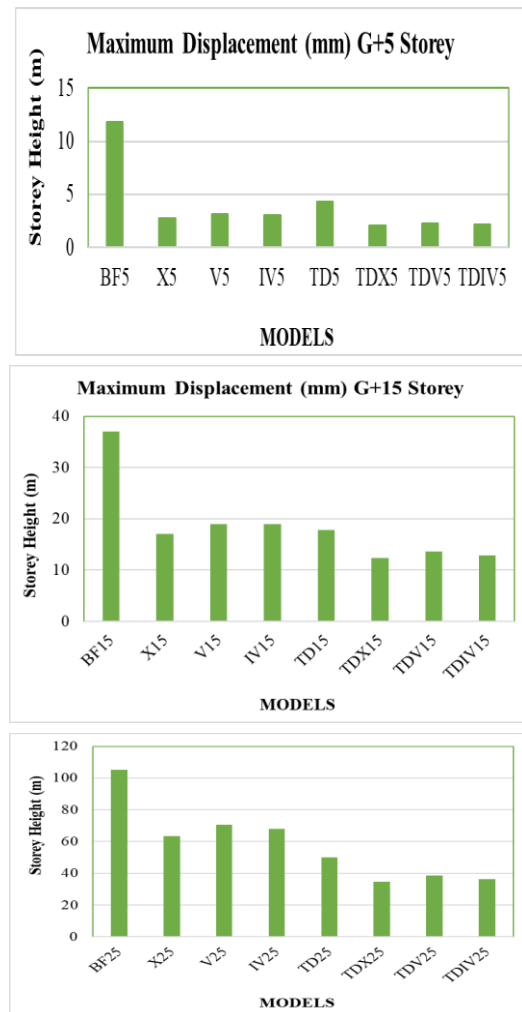


Figure 5: Maximum Storey Displacement

Dynamic Response of Steel Structure with Bracings and Translational Tuned Mass Dampers

1. The Displacement is lowest in X-Bracings followed by IV-Bracings and V-Bracings for all the floor height due to the increase in stiffness by X-Bracings.
2. Excluding the Bare frame condition TDX is having the lowest Displacement due to the increase in stiffness by TDX and V-Bracing is having the highest Displacement for all the floor height due to the lower stiffness in V-Bracing, when compare with all the models.

D. Storey Drift

Maximum storey drift is plotted in Figure 6

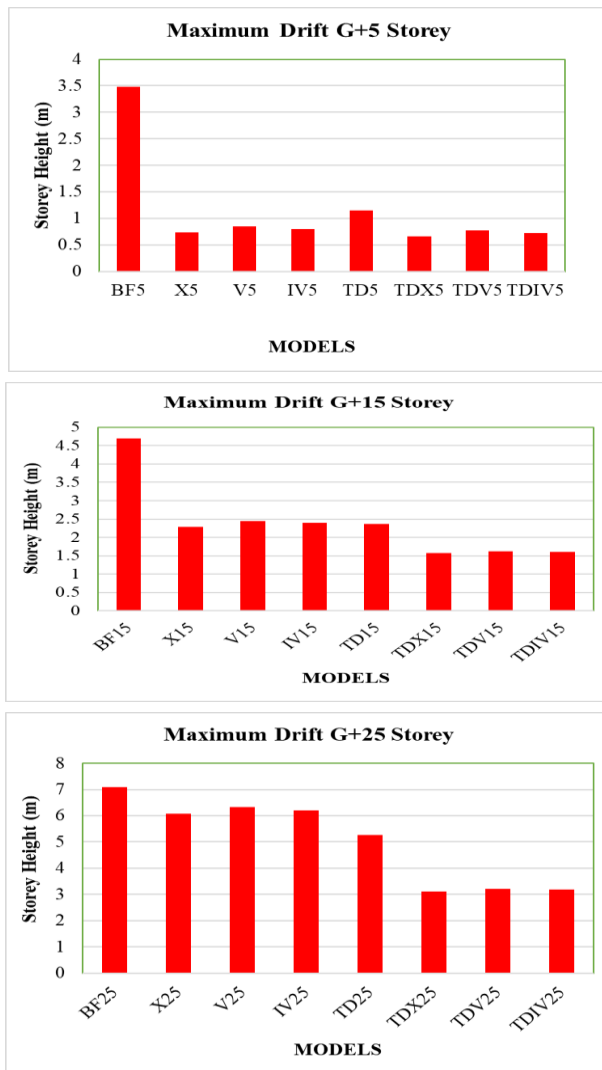


Figure 5: Maximum Storey Drift

1. The Drift is lowest in X-Bracings followed by IV-Bracings and V-Bracings for all the floor height due to the increase in stiffness by X-Bracings.
2. Excluding the Bare frame condition TDX is having the lowest Drift due to the increase in stiffness by TDX and V-Bracing is having the highest Drift for all the floor height due to the lower stiffness in V-Bracing, when compare with all the models.

VI. CONCLUSION

Bare frame Steel Structure with TTMD and X-Bracing is having the highest Base shear and lowest Time period, Displacement and Drift due to the increase in stiffness whereas same structure with V-Bracing is having the lowest

Base shear and highest Time period, Displacement and Drift due to lower stiffness when compared with all the models.

DECLARATION STATEMENT

Funding	No, I did not receive.
Conflicts of Interest	No conflicts of interest to the best of our knowledge.
Ethical Approval and Consent to Participate	No, the article does not require ethical approval and consent to participate with evidence.
Availability of Data and Material	Not relevant.
Authors Contributions	All authors having equal contribution for this article.

REFERENCES

1. B. Adin, Chandrashekar, J.V. Praveen. Dynamic Analysis of Industrial Steel Structure by Using Bracings and Dampers Under Wind Load And Earthquake Load. International Journal of Engineering Research & Technology. ISSN: 2278-0181. Vol. 5, Issue 07. (2016) 87-92. <https://doi.org/10.17577/IJERTV5IS070108>
2. A. Ras, N. Boumechra Seismic Energy Dissipation Study of Linear Fluid Viscous Dampers in Steel Structure Design. Alexandria Engineering Journal. Vol- 55. (2016) 2821-2832. <https://doi.org/10.1016/j.aej.2016.07.012>
3. Saurabh Chalke, Prof P.V. Muley. Vibration Control of Framed Structure Using Tuned Mass Damper. International Journal of Engineering Development and Research. ISSN: 2321-9939. Volume 5. Issue 3. (2017) 708-715.
4. E. Harish, S. Sandeep Kumar Dynamic Analysis of Industrial Steel Structure by Bracings and Dampers Under Wind Load And Earthquake Load. International Journal of Management Technology and Engineering. ISSN No: 2249-7455. Volume 8, Issue 12. (2018) 202-221.
5. B. Ravali, P. Poluraju. Seismic Analysis of Industrial Steel Structure Using Bracings and Dampers. International Journal of Recent Technology and Engineering. ISSN: 277-3878. Volume-7, Issue-6c2. (2019) 22-26.
6. Mirza Aamir Baig, Md. Fasahat Hasmi. Control of Earthquake Induced Motions of Tall Buildings by Tuned Mass Damper. Mirza Aamir Baig Journal of Engineering Research and Application. ISSN: 2248-9622. Vol. 9, Issue 7. (2019) 69-79.
7. Sandeep Kumar And Anjali Rai. Study of Wind Loads on Steel Building with And Without Different Braced System. Journal of Civil Engineering and Environmental Technology. P-ISSN: 2349-8404; E-ISSN: 2349-879x. Volume 7, Issue 2. (2020)134-140.
8. Abdul Bari Sayyed, Ganesh Sonar, Kunal Suryawanshi, Mohammad Gaus Shaikh. Design and Analysis of Tune Mass Damper System. International Journal of Engineering Research & Technology (IJERT), ISSN: 2278-0181. Vol. 9 Issue 10. (2020) 588-591.
9. Chi-Chang Lin In. Vibration Control of Civil Structures Using Tuned Mass Dampers with Adjustable Stiffness. San Francisco, California, USA. (2013)18-23.
10. V.M. Thakur, and P.D. Pachpor. Seismic Analysis of Multi-Storeyed Building with TMD (Tuned Mass Damper). International Journal of Engineering Research and Applications. Vol. 2, Issue 1. (2012)319-326.

AUTHORS PROFILE



Naveena K N PG Student, M. Tech in Earthquake Engineering, Department of Civil Engineering, University Visveswaraya College of Engineering, Bangalore University, Jnana Bharathi Campus, Bangalore, Karnataka, India. This is under the Bangalore university Karnataka, India. He has completed Bachelor of Engineering from Dr Ambedkar Institution of Technology Kengunte circle Mallathahalli, near Jnana Bharathi Bangalore, Karnataka, India. This is under the Belgaum university Karnataka, India. He has completed Diploma in Civil Engineering from Government polytechnic Ramanagara and Ramanagara District Near Bangalore, Karnataka, India.

This is under department of technical education Bangalore, Karnataka, India. He did Mini project in Dynamic response of steel structure with bracings from M. Tech in Earthquake Engineering, Department of Civil Engineering, University Visveswaraya College of Engineering, Bangalore University, Jnana Bharathi Campus, Bangalore, Karnataka, India.



Dr. Chethan. K Associate Professor, Department of Civil Engineering, University Visveswaraya College of Engineering, Bangalore University, Jnana Bharathi Campus, Bangalore, Karnataka, India. He has completed Doctor of Philosophy Based on Structural Engineering and Master of Engineering in Industrial Engineering and Bachelor of Engineering. He is Present work in Associate Professor, Department of Civil Engineering, University Visveswaraya College of Engineering, Bangalore University, Jnana Bharathi Campus, Bangalore, Karnataka, India. He has also Chairman of Master of technology in Earthquake Engineering, Department of Civil Engineering, University Visveswaraya College of Engineering, Bangalore University, Jnana Bharathi Campus, Bangalore, Karnataka, India. He has published So many research papers in international journals and conferences and guiding of Ph.D. scholars, guided of P.G. Students dissertations and U.G. Students project works.

Disclaimer/Publisher's Note: The statements, opinions and data contained in all publications are solely those of the individual author(s) and contributor(s) and not of the Blue Eyes Intelligence Engineering and Sciences Publication (BEIESP)/ journal and/or the editor(s). The Blue Eyes Intelligence Engineering and Sciences Publication (BEIESP) and/or the editor(s) disclaim responsibility for any injury to people or property resulting from any ideas, methods, instructions or products referred to in the content.